

## Remote control system

This remote control system for FM transmitters can be operated by Cable or by GSM Modem; basically, it allows monitoring and modifying remotely the

overall setting of transmitters. In case of failures in the transmitter which is under control, the software of the remote control automatically sends an SMS warning message.



### DESCRIPTION

All the main parameters (frequency, levels, mono-stereo- pre-emphasis, output power) are adjustable through the keypad and are automatically stored in the memory, even in case of lack of mains. Many events can be stored; every alarm information is advised with its start alarm date and the end alarm date.

The main measurements realized by this system are: value of modulation, heatsink temperature, mains line voltage, voltage and current of the RF final stage, main oscillator faulty.

The transmitter can be controlled by means of the keypad or in remote mode.

As a monitor, a common personal computer can be connected on the dedicated connector on the front panel. By simply installing an appropriate program on the PC, it is possible to set and see all the parameters.

Every transmitter can be connected to a GSM Modem with an external antenna, to link the transmitter to the public telephone network. It is possible to control and modify all the parameters of the transmitter just like if the user were on the site.

CODE	MODEL	DESCRIPTION
F634.06		Modem analogico
F634.07		Modem GSM
F634.08		Opzione software

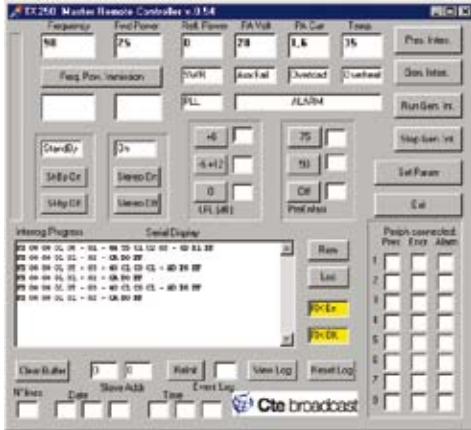
## TECHNICAL FEATURES

- › Remote setting and measurement of: direct power, reflected power, modulation, current, voltage, temperature, power supply
- › Immediate information via GSM on unexpected events (managed by two different telephone numbers)
- › Password as system protection
- › Friendly use
- › Operated by TCP/IP protocol using SNMP protocol

## PC System requirements:

- Processor Type: PENTIUM or higher
- Operative system: WINXP
- RAM: 256MB
- Graphic: SVGA 600x800/768x1024

## SOFTWARE



## EXAMPLE OF A STANDARD TRANSMITTING STATION

